

The PPI for Software Consultancy Services in The Netherlands

Uwe Kirsten
ukrn@cbs.nl

Voorburg Group meeting, Seoul
10 to 14 September 2007



1. Service being priced (1)

Computer And Related Services

= NACE rev. 1.1 code 72 ≈ ISIC 72

Information Technology Services

= NACE rev. 2 code 62 ≈ ISIC version 4

Software Consultancy Services And Supply

= NACE 72.2 = major part of NACE 72

Other Software Consultancy Services And Supply

= NACE 72.22

Nearly no prepackaged software in The Netherlands

= NACE 72.21



1. Service being priced (2)

CPA 72.22.xx Software Consultancy

| | |
|-----------|-----------------------------------------------------|
| 11 | Systems and technical consulting services |
| 12 | Custom software development services |
| 13 | Systems analysis and programming services |
| 14 | Systems maintenance services |
| 15 | Other professional computer-related services |



2. Pricing unit of measure

- ▶ Price mechanism is mostly hours
- ▶ Industry invoices mostly hours
- ▶ Few projects based on success
- ▶ Few success-related projects are based on a mark-up
- ▶ Pricing unit of measure is hours



3. Market conditions and constraints (1)

Market size

In 2004:

- ▶ Industry turnover: €11 billion
- ▶ About 30,000 companies
- ▶ About 120,000 employees
- ▶ 22 big companies of more than 500 employees
- ▶ Market share of big companies: ca. 45%

In 2007?: market has likely increased



3. Market conditions and constraints (2)

Market developments

- ▶ Many mergers and takeovers between 2005 and 2007: Big companies reduced from 22 to 15
- ▶ Continuously product innovations
- ▶ Productivity improvements: new programming software

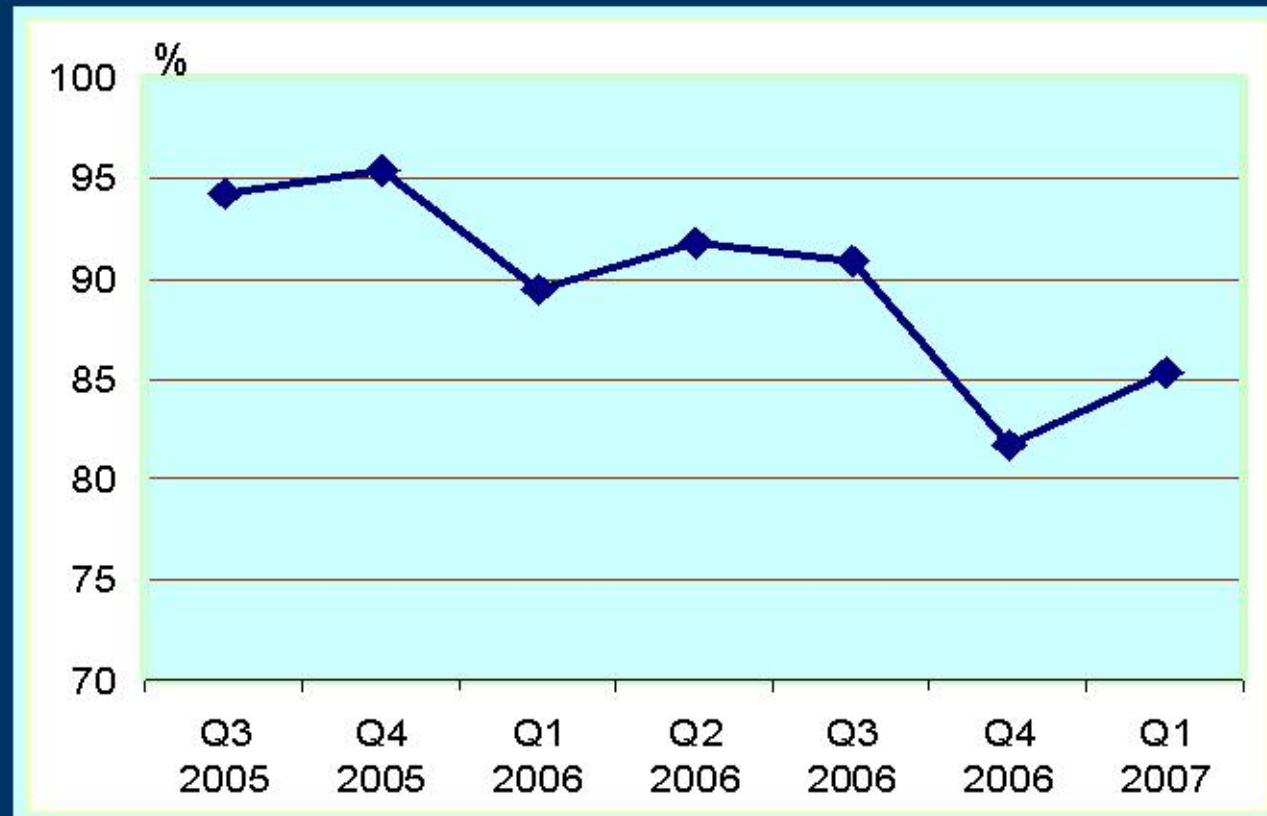
Record keeping practice

- ▶ Administration of hours and turnover
- ▶ mostly split per level of competence



3. Market conditions and constraints (3)

Response Rates:



4. Standard classification structure

Index structure

- ▶ no submarkets
- ▶ 10 strata classified according to number of employees
- ▶ Companies of less than 6 employees (the lowest three strata) are excluded

Sampling

- ▶ Oversampling factor of three
- ▶ Natural limit of number of companies per stratum



5. Evaluation of standard vs. definition and market conditions

Industry Associations:

prefer NACE rev. 2 over NACE rev. 1.1

National Accounts:

ISIC version 3 code 3000 Manufacture of computers and other information processing equipment
partially included in ISIC version 4 code 6209 ?



6. National Accounts concepts and measurement issues (1)

Supply-And-Use tables: Deflation! B-B, B-all.

Evaluation of the *Software Consultancy SPPI* by National Accounts

3 fields of evaluation:

1. Plausibility
2. Coverage
3. Timeliness



6. National Accounts concepts and measurement issues (2)

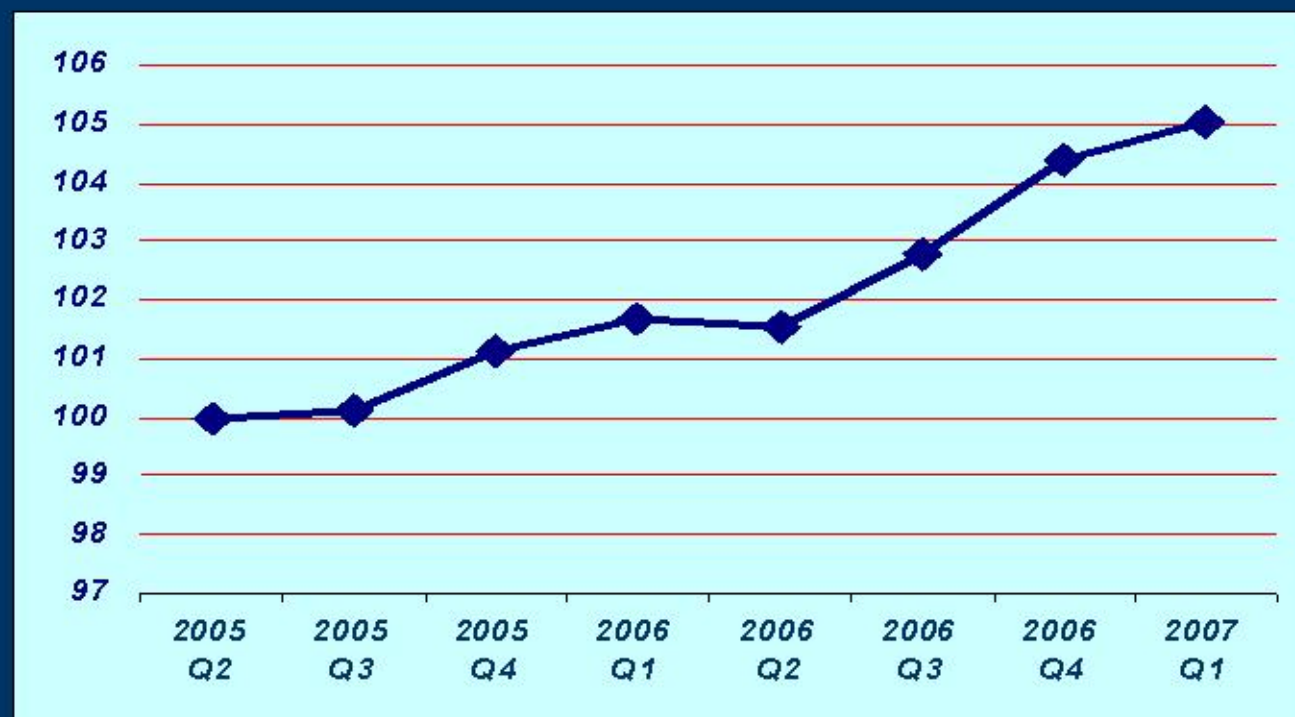
Plausibility

- ▶ *comparison of SPPI* with other published data or data from trade associations
- ▶ *two basic price tendencies* since 2006
 - ▶ *demand* induced **upward pressure** on prices
 - ▶ *competition* together with cost-efficiency gains through offshoring (e.g. to India) induced **downward pressure** on prices



6. National Accounts concepts and measurement issues (3)

PPI for Software Consultancy



6. National Accounts concepts and measurement issues (4)

Coverage

- ▶ NA classification tally with NACE on two digit level
- ▶ Computer And Related Services (NACE 72)
imputation by Software Consultancy (NACE 72.22)
- ▶ Development of SPPIs for data-processing & web-portals (NACE rev. 2 code 63.1)
- ▶ Completion of Software Consultancy SPPI by an overall IT SPPI (NACE rev. 2 code 62)



6. National Accounts concepts and measurement issues (5)

Timeliness

- ▶ *Questionnaires dispatch moments* generally:
 - ▶ mid-period observation
 - ▶ beginning of next period
- ▶ SPPI preliminary publication maximum 100 days after the observation period
- ▶ NA definite estimation: maximum 75 days
- ▶ Time schedule is scheduled for reorganization



7. Pricing method and criteria for choosing pricing methods

Chosen pricing method:

Hourly charge-out rates

- ▶ split of turnovers and hours into competence levels

Criteria for choosing pricing methods:

- ▶ Homogeneity
- ▶ Price mechanisms
- ▶ Pricing unit



8. Quality adjustment methodology

Four productivity issues:

1. Individual productivity changes (replacement, settling into a job)
2. Company productivity (technical, process)
3. Productivity of a pool of projects changes, due to a change of the mix of the projects subject to a mix of competence levels needed
4. Project productivity changes due to changes of composition of personnel needed



9. Evaluation of comparability with turnover / output measures

- ▶ *Turnover data for Computer And Related Services* (= NACE 72) on a two digit level only
 - ▶ Imputation by Software Consultancy SPPI (= NACE 72.22)
- ▶ *Turnover for weighting companies:* questionnaires ask for turnover relevant to the priced service
- ▶ *Turnover for weighting strata:* turnover estimation from Annual Structural Statistics



10. Summary (1)

- ▶ **Publication** SPPI for Software Consultancy since July 2007 (series from 2nd quarter 2005)
- ▶ **Majority of the turnover** is generated in Other Software Consultancy And Supply (NACE rev.1.1 code 72.22).
- ▶ **Observation period:** quarter year



10. Summary (2)

- ▶ **Classification**
 - ▶ No distinction of submarkets
 - ▶ PPS sampling
- ▶ **Aggregation**
 - ▶ Article indices: geometric average
 - ▶ Company indices: Lowe-index
 - ▶ Strata indices: Lowe-index
- ▶ **Weighting:** Turnover from companies and Annual Statistic for Turnover estimation



10. Summary (3)

- ▶ ***Pricing method:*** hourly charge-out rates
- ▶ ***Criteria for choosing pricing methods:*** homogeneity, price mechanisms, pricing unit,
- ▶ ***Quality adjustment*** on a case-to-case basis



Questions?

Thank You !!!

